

Appendix 1. Performance Analysis and Benchmarking

Contents

Looked After Children - Volumes and Activity

OP389	Children in care including unaccompanied asylum seeking children
OP389a	The rate of Children in care per 10,000 pop
Op415	Children becoming looked after
Op416	Children ceasing to be looked after
OP457	Number of LAC who ceased to be looked after who had been looked after for less than a month
OP414	Percentage of Children becoming looked after previously subject to CP plan
OP458	Total No. days children have been in care (Excluding placed at home)
HY32	Percentage of children placed in Haringey Provision
Op382	Children in Care visits
Op417	Care Proceedings Initiated- (No. of children)
Op 419	Number of children missing/absconded from care at any point in the month
OP386 (NI)	Children in care cases which were reviewed within required timescales

Looked After Children - Stability of Placements

HY62	Stability of placements of looked after children: number of moves
Op63	Stability of placements of looked after children: length of placement

Care Leavers

Op147	Care leavers in suitable accommodation
Op148	Care leavers in education, employment or training

Adoption and Special Guardianship Orders

Op 418	Number of adoptions/special guardianship orders
Op 418a	Number of adoptions
Op 418b	Number of special guardianship orders
Op391 (NI)	Timeliness of placements of looked after children for adoption following an agency decision that the child should be placed for adoption
HY483	Average days from becoming looked after to being placed for adoption for children adopted in period
Op486	Placed for adoption within 21 months of becoming looked after

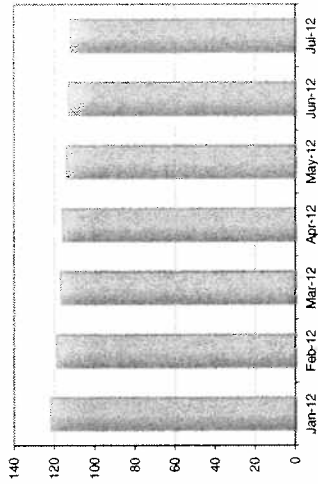
For further long term trend data, benchmarking, contextual data and performance against national thresholds, please refer to Appendix B, the Adoption Scorecard quarterly update. Please note that this is only updated quarterly.

Where available, benchmarking is provided for England, London and/or Haringey's Statistical Neighbours. Haringey's Statistical Neighbours group is defined by Ofsted based on socio-demographic information relating specifically to Children's Services and comprises Croydon, Greenwich, Hackney, Hammersmith and Fulham, Islington, Lambeth, Lewisham, Southwark, Waltham Forest and Wandsworth. The averages provided for benchmarking in this report are simple means.

This section contains a series of measures which help to provide a picture of the current children in care cohort and the service provided to them, covering the following areas: the numbers of children in care (Op389, Op389a); the movement of children in and out of care and their circumstances (Op415, Op416, Op457, Op414); service activity (Op458, HY32, Op382, Op417, Op419, Op386).

OP389 Children in care including unaccompanied asylum seeking children
OP389a The rate of Children in care per 10,000 pop

Recent trend (last 6 months)	Key	Jan-12	Feb-12	Mar-12	Apr-12	May-12	Jun-12	Jul-12	Traffic Light
Haringey Number of CiC		600	584	574	568	558	555	551	Data Only
Haringey Rate per 10,000 pop		122	119	117	116	114	113	112	Data Only



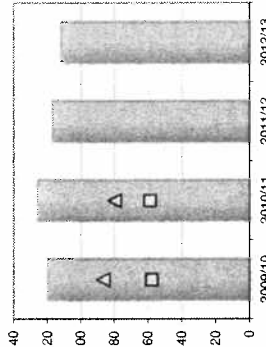
Performance Comment

- There were 551 children in care on the last day of July (524 excluding unaccompanied minors). 627 children were in care this time last year.
- This equates to a rate of children in care per 10,000 population of 112, a significant reduction compared to this time last year (128).
- The rate remains higher than the statistical neighbours average (80 as at March 2011) and significantly higher than the England average (59)

Service Comment

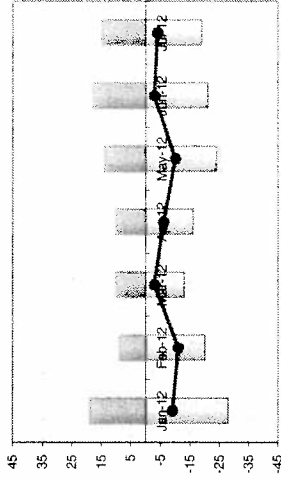
The numbers of looked after children have decreased as a result of timely community based support being put in place including the implementation of a wider range of support services. The numbers and rate of the reduction is being monitored carefully to ensure that care is used when children cannot be cared for within their own family.

Long term trend (last 6 years)	Key	2006/07	2007/08	2008/09	2009/10	2010/11	2011/12	2012/13	Traffic Light
Haringey Number of CiC		-	427	492	591	618	574	551	Data Only
Haringey Rate per 10,000 pop		-	-	-	120	126	117	112	Data Only
Statistical Neighbours Rate per 10,000	△	96	91	88	87	80	-	-	
England Rate per 10,000	□	55	54	55	58	59	-	-	



Op415 Children becoming looked after and
Op416 Children ceasing to be looked after

Recent trend (last 6 months)	Key	Jan-12	Feb-12	Mar-12	Apr-12	May-12	Jun-12	Jul-12	Traffic Light
Haringey (becoming)		19	9	10	10	14	18	15	Data Only
Haringey (ceasing)		-28	-20	-13	-16	-24	-21	-19	
Haringey Net Increase / Decrease	▲	-9	-11	-3	-6	-10	-3	-4	



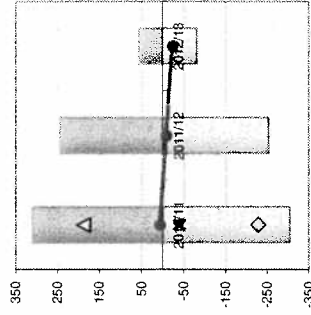
Performance Comment

- 15 children became looked after in July and 19 ceased to be looked after.
- 55 children have become looked after in the year to date and 78 have ceased to be looked after.
- The cohort has decreased by 23 children in the year to date

Service Comment

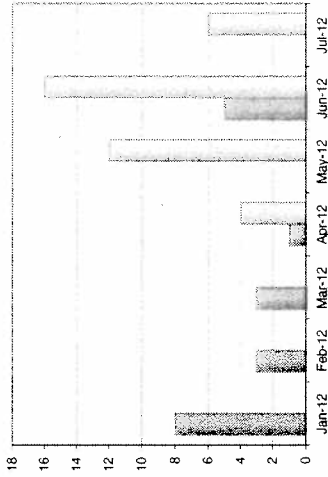
Stability in the long term social work teams has resulted in more timely management of care plans. Children are moving to more permanent care arrangements such as Special Guardianship and Adoption and were appropriate children are returning to live with family members.

Long term trend (last 6 years)	Key	2006/07	2007/08	2008/09	2009/10	2010/11	2011/12	2012/13	Traffic Light
Haringey (becoming)		-	-	-	-	311	245	57	Data Only
Haringey (ceasing)		-	-	-	-	-304	-253	-81	
Haringey Net Increase / Decrease	▲	-	-	-	-	7	-8	-24	
Stat. Neighbours (becoming)	△	208	192	193	216	189	-	-	
Stat. Neighbours (ceasing)	◇	-219	-212	-208	-219	-229	-	-	
Statistical Neighbours Net Increase	*▲	-11	-20	-15	-3	-40	-	-	



OP457 Number of looked after children who ceased to be looked after who had been looked after for less than a month

Recent trend (last 6 months)	Key	Jan-12	Feb-12	Mar-12	Apr-12	May-12	Jun-12	Jul-12	Traffic Light
Haringey		8	3	3	1	0	5	0	Data Only
Previous Year	Key				Apr-11	May-11	Jun-11	Jul-11	
Haringey (previous year)					4	12	16	6	



Performance Comment

- In the year to date, 6 children have been looked after for less than a month before ceasing to be looked after, compared to 38 for the same period last year.

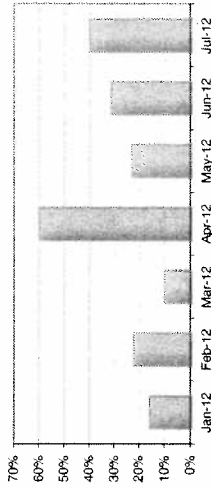
Service Comment

The service has focused on reducing the number of short term admissions to care were alternative safe arrangements could be made whilst assessments were being undertaken.

There is currently no available benchmarking for this indicator. Strategy and Business Intelligence undertake regular environment scanning to ensure that benchmarking data is as complete and up to date as possible

OP414 Percentage of Children becoming looked after previously subject to Child Protection plan

Recent trend (last 6 months)	Key	Jan-12	Feb-12	Mar-12	Apr-12	May-12	Jun-12	Jul-12	Traffic Light
Haringey		16%	22%	10%	60%	23%	31%	40%	Data Only



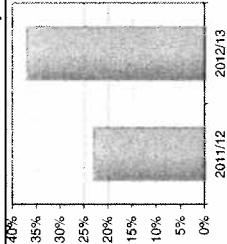
Performance Comment

- 40% of children who became looked after in July had previously been subject to a child protection plan (6 out of 15). The year to date figure is 37% (20 out of 54 children), up from 23% last year.

Service Comment

Caring for children away from their family home should be used when it is not possible for children to remain safely and securely at home. Child protection Plans are put in place where there are significant concerns about a child's welfare, it is therefore expected that a high proportion of children and their families should have supported whilst being subject to a Protection Plan before they come into care.

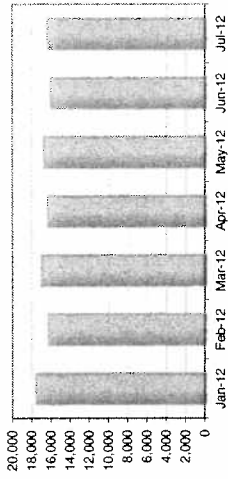
Long term trend (last 6 years)	Key	2006/07	2007/08	2008/09	2009/10	2010/11	2011/12	2012/13	Traffic Light
Haringey		-	-	-	-	-	23%	37%	Data Only



There is currently no available benchmarking for this indicator. Strategy and Business Intelligence undertake regular environment scanning to ensure that benchmarking data is as complete and up to date as possible

OP458 Total No. days children have been in care (Excluding placed at home)

Recent trend (last 6 months)	Key	Jan-12	Feb-12	Mar-12	Apr-12	May-12	Jun-12	Jul-12	Traffic Light
Haringey		17,548	16,268	16,950	16,332	16,750	16,013	16,309	Data Only



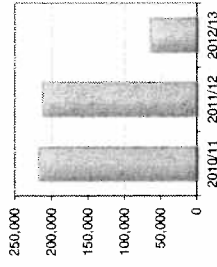
Performance Comment

- The total number of days in care in July was 16,309, up slightly from the previous month.
 - However, the year to date figure of 65,404 is significantly lower than the same time last year (72,080)

Service Comment

This data demonstrates the reduction in the number of nights care provided which is also another method of monitoring the use of care over time.

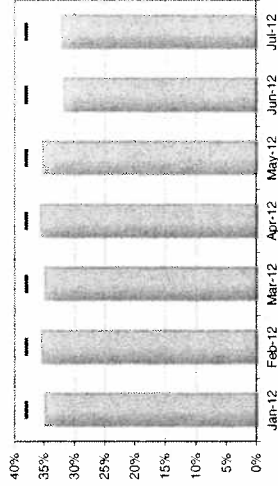
Long term trend (last 6 years)	Key	2006/07	2007/08	2008/09	2009/10	2010/11	2011/12	2012/13	Traffic Light
Haringey		-	-	-	-	217,488	212,812	65,404	Data Only



There is currently no available benchmarking for this indicator. Strategy and Business Intelligence undertake regular environment scanning to ensure that benchmarking data is as complete and up to date as possible

HY32 Percentage of children placed in Haringey Provision

Recent trend (last 6 months)	Key	Jan-12	Feb-12	Mar-12	Apr-12	May-12	Jun-12	Jul-12	Traffic Light
Haringey		34.8%	35.4%	34.8%	35.6%	35.2%	31.8%	32.1%	Red
Haringey Target	38%	38%	38%	38%	38%	38%	38%	38%	



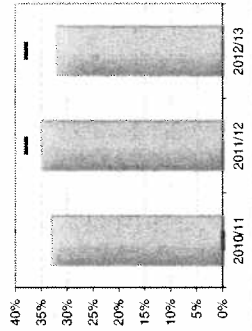
Performance Comment

- The percentage of children in Haringey Provision has declined since April and remains well below the 38% target.
 - 177 out of 551 children were in Haringey provision in July, compared to 202 out of 568 in April. The reduction is largely due to a decline in the number of in house foster care placements (from 187 in April to 168 in July).

Service Comment

The proportion of children placed in Haringey provision has declined since April 2012. The use of Haringey foster care is showing a reducing trend. This is being investigated and action will be taken to manage in house resources more efficiently.

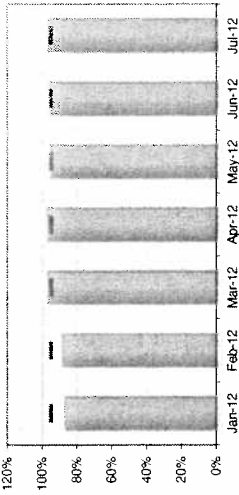
Long term trend (last 6 years)	Key	2006/07	2007/08	2008/09	2009/10	2010/11	2011/12	2012/13	Traffic Light
Haringey		-	-	-	-	33.0%	35.0%	32.1%	Red
Haringey Target	38%	-	-	-	-	-	38%	38%	



There is currently no available benchmarking for this indicator. Strategy and Business Intelligence undertake regular environment scanning to ensure that benchmarking data is as complete and up to date as possible

Op382 Children in Care visits (% of visits due which were completed within the 6 week timescale)

Recent trend (last 6 months)	Key	Jan-12	Feb-12	Mar-12	Apr-12	May-12	Jun-12	Jul-12	Traffic Light
Haringey	86.8%	88.4%	96.7%	97.0%	94.8%	95.4%	96.5%	95%	Green
Haringey Target	95%	95%	95%	95%	95%	95%	95%	95%	



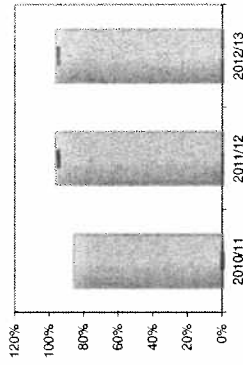
Performance Comment

- 96.5% of children in care visits are up to date, above the 95% target.
- This is based on a 6 week timescale or, in exceptional cases, 3 monthly visits.

Service Comment

Performance continuous to be maintained.

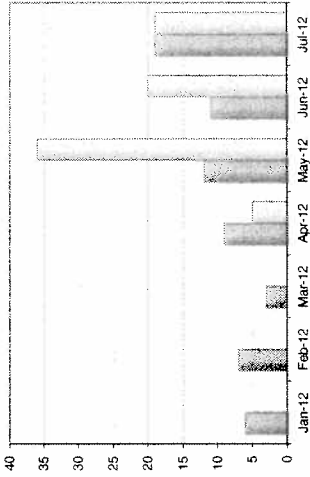
Long term trend (last 6 years)	Key	2006/07	2007/08	2008/09	2009/10	2010/11	2011/12	2012/13	Traffic Light
Haringey	-	-	-	-	86.1%	96.7%	96.5%	95%	Green
Haringey Target	-	-	-	-	-	-	95%	95%	



There is currently no available benchmarking for this indicator. Strategy and Business Intelligence undertake regular environment scanning to ensure that benchmarking data is as complete and up to date as possible

Op417 Care Proceedings Initiated- (No. of children)

Recent trend (last 6 months)	Key	Jan-12	Feb-12	Mar-12	Apr-12	May-12	Jun-12	Jul-12	Traffic Light
Haringey		6	7	3	9	12	11	19	Data Only
Haringey (previous year)					5	36	20	19	



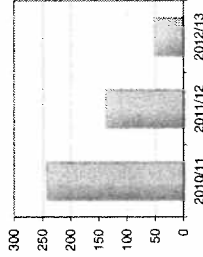
Performance Comment

- The number of children where care proceedings were initiated has increased steadily through the year so far, with 19 in July.
- However, the year to date figure is 51, lower than the 80 care proceedings initiated by this point last year.

Service Comment

The number of care proceedings that are initiated is lower compared to the same time last year, the service meets monthly with colleagues from legal services to monitor activity to ensure that the statutory legal framework is used in a timely way when working with families.

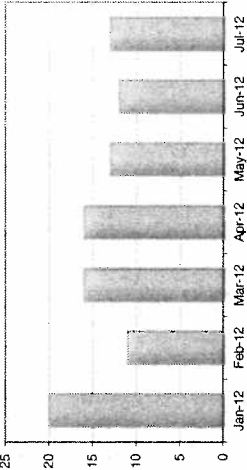
Long term trend (last 6 years)	Key	2006/07	2007/08	2008/09	2009/10	2010/11	2011/12	2012/13	Traffic Light
Haringey		-	-	-	-	243	137	51	Data Only



There is currently no available benchmarking for this indicator. Strategy and Business Intelligence undertake regular environment scanning to ensure that benchmarking data is as complete and up to date as possible

Op 419 Number of children missing/absconded from care at any point in the month

Recent trend (last 6 months)	Key	Jan-12	Feb-12	Mar-12	Apr-12	May-12	Jun-12	Jul-12	Traffic Light
Haringey		20	11	16	16	13	12	13	Data Only



Performance Comment

- 13 children were missing from care during the month of July and 6 remained missing at the end of the month.
- The number of children missing is similar to the level seen this time last year, but down from the 20 recorded in January.

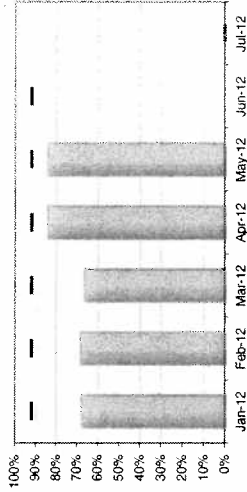
Service Comment

Weekly updates are provided to the Director and lead Member on children missing from care and the action that is being taken to return children to their care placements.

There is currently no available benchmarking for this indicator. Strategy and Business Intelligence undertake regular environment scanning to ensure that benchmarking data is as complete and up to date as possible

OP386 (NI Children in care cases which were reviewed within required timescales

Recent trend (last 6 months)	Key	Jan-12	Feb-12	Mar-12	Apr-12	May-12	Jun-12	Jul-12	Traffic Light
Haringey	■	67.8%	68.6%	66.5%	84.1%	84.1%	-	-	Red
Haringey Target		92%	92%	92%	92%	92%	92%		

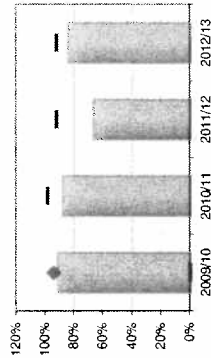


Performance Comment

The report that pulls the data for reviews from Framework-1 is not working properly. This has been reported to Corelogic and is under investigation. Until this is resolved it is not possible to accurately report on the cases that are due for review and whether reviews have happened within timescale.

Local systems based on Independent Reviewing Officer reporting indicates that allocated reviews are being conducted within required timescales which suggest that actual performance is closer to target. The service has now put in place a local system to monitor performance.

Long term trend (last 6 years)	Key	2006/07	2007/08	2008/09	2009/10	2010/11	2011/12	2012/13	Traffic Light
Haringey	■	-	-	-	91.1%	87.8%	66.5%	84.1%	Red
Haringey Target		-	94%	-	-	98%	92%	92%	
London	◆	91%	93%	92%	94%	-	-	-	

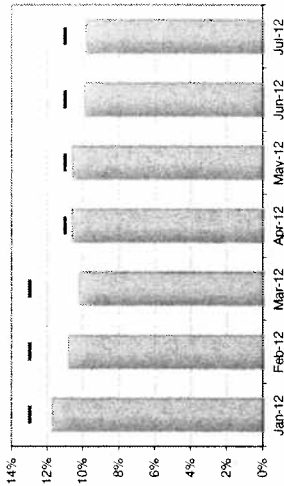


Looked After Children: Stability of Placements

These measures relate to the stability of placements of looked after children. The first (HY62) is based on the number of placements each child in the cohort has experienced. It gives the percentage of children who have had three or more placements during the last year (the figures shown are therefore for a rolling year e.g. June 2011 to July 2012). The second measure (Op63) is based on the length of placement; it gives the percentage of all children who have been in care for at least 2.5 years who have been in the same placement for at least 2 years.

HY62 Stability of placements of looked after children: number of moves

Recent trend (last 6 months)	Key	Jan-12	Feb-12	Mar-12	Apr-12	May-12	Jun-12	Jul-12	Traffic Light
Haringey	■	11.7%	10.8%	10.2%	10.6%	10.6%	9.9%	9.8%	Green
Haringey Target	■	13%	13%	13%	11%	11%	11%	11%	●



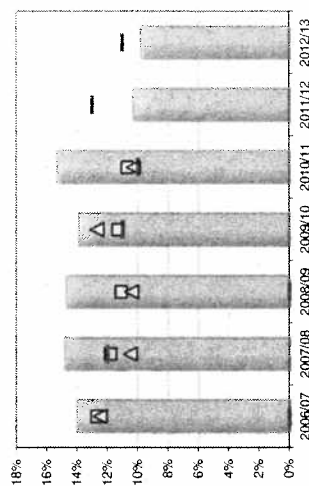
Performance Comment

- 54 out of 551 (9.8%) looked after children have had 3 or more placements in the last year,
 - This is within target and slightly better than the statistical neighbours average for 2010/11 (10.3%).
 - The number of children in care with two placements is also tracked and appears to be increasing (61 as at July, or 11%).

Service Comment

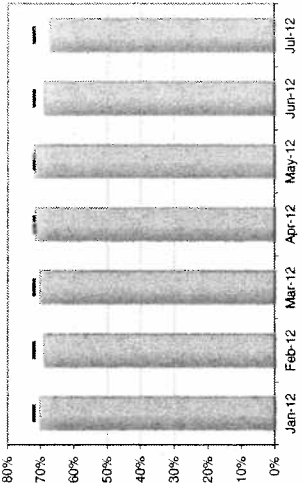
Investigations are underway by the service, assisted by reports from the performance team, to understand the children affected and the patterns of our placements. We are currently looking at all children with 2 placements. It is expected that in some cases children may move placements for positive reasons, for example a planned move from a short term placement to a long term more permanent placement. The service needs to ensure that the moves are not a result of lack of placement choice or poor care planning.

Long term trend (last 6 years)	Key	2006/07	2007/08	2008/09	2009/10	2010/11	2011/12	2012/13	Traffic Light
Haringey	■	14.0%	14.8%	14.7%	13.9%	15.3%	10.3%	9.8%	Green
Haringey Target	■	-	12%	-	11%	10%	13%	11%	●
Statistical Neighbours	△	12.5%	10.5%	10.4%	12.7%	10.3%	-	-	
London	◆	12.1%	11.2%	11.1%	11.4%	-	-	-	
England	□	12.7%	11.8%	11.1%	11.3%	10.7%	-	-	



Op63 Stability of placements of looked after children: length of placement

Recent trend (last 6 months)	Key	Jan-12	Feb-12	Mar-12	Apr-12	May-12	Jun-12	Jul-12	Traffic Light
Haringey	70.3%	69.1%	70.3%	71.6%	71.8%	68.9%	67.2%	72%	Red
Haringey Target	72%	72%	72%	72%	72%	72%	72%	72%	●



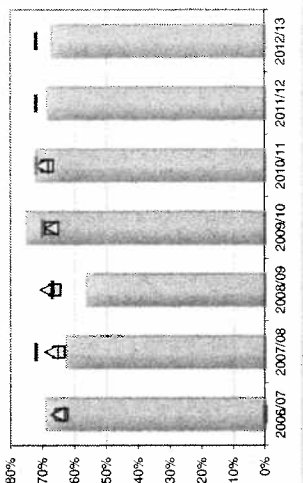
Performance Comment

- 67.2% of children under 16 (121 out of 180 cohort) who have been in care for 2.5 years have been in the same placement for at least 2 years.
 - This is lower than the target of 72% and slightly worse than the statistical neighbours average.

Service Comment

This indicator is linked to the previous indicator and is under investigation.

Long term trend (last 6 years)	Key	2006/07	2007/08	2008/09	2009/10	2010/11	2011/12	2012/13	Traffic Light
Haringey	69.0%	62.7%	56.3%	75.0%	72.0%	68.6%	67.2%	72%	Red
Haringey Target	-	72%	67%	70%	72%	72%	72%	72%	●
Statistical Neighbours	65.3%	67.3%	68.7%	67.3%	70.4%	-	-	-	-
London	64.6%	66.8%	66.0%	66.6%	-	-	-	-	-
England	64.3%	65.0%	66.2%	67.4%	68.6%	-	-	-	-

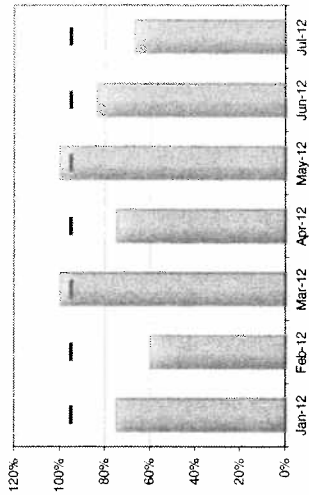


Care Leavers

These measures are based on young people who turn 19 in the month, 65 young people are due to turn 19 in 2012/13. Monthly percentages for this indicator are therefore based on small numbers and should be interpreted with care. The status of the young people concerned needs to be in established within four months of leaving care otherwise they cannot be counted as in EET or in suitable accommodation. Accommodation is deemed suitable if it provides safe, secure and affordable provision for young people.

Op147 Care leavers in suitable accommodation

Recent trend (last 6 months)	Key	Jan-12	Feb-12	Mar-12	Apr-12	May-12	Jun-12	Jul-12	Traffic Light
Haringey	■	75%	60%	100%	75%	100%	83%	67%	Red
Haringey Target	■	95%	95%	95%	95%	95%	95%	95%	●



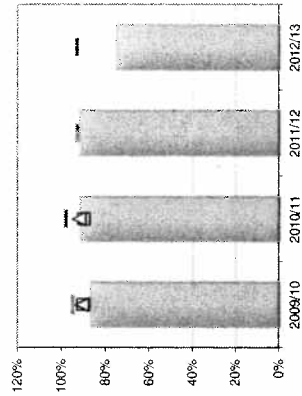
Performance Comment

- 75% (15 out of 20) of care leavers for the year to date were in suitable accommodation, against a 93% target.
- 6 out of 9 young people who left care in July were in suitable accommodation.

Service Comment

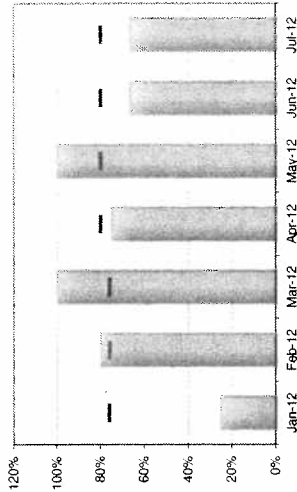
The young peoples service are mind full that suitable accommodation needs to be provided to care leavers to give them a good start to independent living. The service is working with Housing to ensure that young people can access their permanent accommodation more timely and reduce the need for short term accommodation. If young people have a custodial sentence this rightly impacts on this performance.

Long term trend (last 6 years)	Key	2006/07	2007/08	2008/09	2009/10	2010/11	2011/12	2012/13	Traffic Light
Haringey	■	-	-	-	87%	92%	92%	75%	Red
Haringey Target	■	-	95%	95%	95%	98%	93%	93%	●
Statistical Neighbours	△	92%	92%	89%	91%	92%	-	-	
London	◆	89%	90%	88%	-	-	-	-	
England	□	87%	88%	90%	90%	90%	-	-	



Op148 Care leavers in education, employment or training

Recent trend (last 6 months)	Key	Jan-12	Feb-12	Mar-12	Apr-12	May-12	Jun-12	Jul-12	Traffic Light
Haringey	■	25%	80%	100%	75%	100%	67%	67%	Red
Haringey Target	■	76%	76%	80%	80%	80%	80%	80%	●



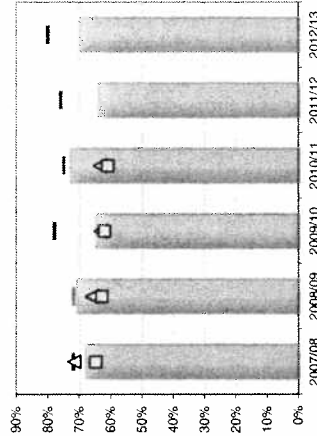
Performance Comment

- 6 out of 9 young people who left care in July were in education, employment or training (EET).
- As at the end of July 70% (14 out of 20) of care leavers for the year to date were in EET, below the 80% target. However, this figure compares favourably with statistical neighbours.
- In recent months, a number of children have been in prison and cannot therefore be counted as in suitable accommodation.

Service Comment

Care Leavers up to Adulthood are the subject of Looked After Child Reviews where education and training/personal development is discussed with the young person and strategies agreed. This is also addressed during each YP monthly LAC visit with their allocated social worker. The Virtual School has extended it's work to include young people 18 plus and has worked with the Tottenham Foundation and neighbouring borough's to increase the range of alternative programmes which provide mentoring and support to young people.

Long term trend (last 6 years)	Key	2006/07	2007/08	2008/09	2009/10	2010/11	2011/12	2012/13	Traffic Light
Haringey	■	68%	68%	71%	65%	73%	64%	70%	Red
Haringey Target	■	-	72%	72%	78%	75%	76%	80%	●
Statistical Neighbours	△	66%	72%	66%	63%	63%	-	-	
London	◆	66%	68%	65%	67%	-	-	-	
England	□	63%	65%	63%	62%	61%	-	-	

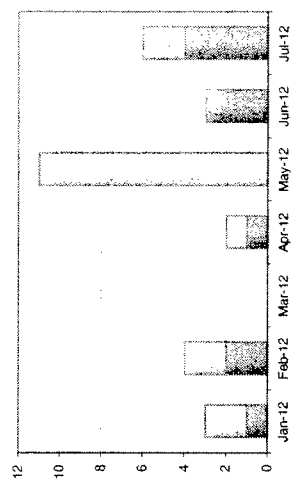


Adoption and Special Guardianship Orders

This section provides information on the volume of adoptions and special guardianship orders and the timeliness of placements of looked after children for adoption following an agency decision (% placed within 12 months). It also provides a monthly update on the three key adoption scorecard indicators A1, A2 and A3 relating to the timeliness of the adoption process. For further long term trend data, benchmarking, contextual data and performance against national adoption indicators, please refer to Appendix B, the Adoption Scorecard quarterly update. Please note that this is only updated quarterly due to the relatively small number of children involved - more regular updates may be misleading as small variations can skew the outcomes.

Op 418 Number of adoptions/special guardianship orders
 Op 418a Number of adoptions
 Op 418b Number of special guardianship orders (SGOs)

Recent trend (last 6 months)	Jan-12	Feb-12	Mar-12	Apr-12	May-12	Jun-12	Jul-12	Traffic Light
Haringey (Adoptions and SGOs)	3	4	-	2	11	3	6	Data Only
Haringey- Adoptions	1	2	-	1	-	3	4	
Haringey- SGOs	2	2	-	1	11	-	2	



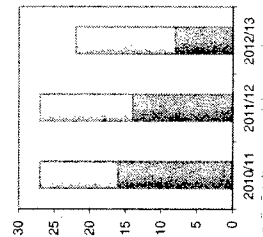
Performance Comment

- There have been 8 adoptions in the year, 4 of these in July. The target set for 2012/13 is 15. The statistical neighbours average for 2010/11 was 16.
 - There have been 14 special guardianship orders in the year to date; this is more than there were in all of 2011/12.

Service Comment

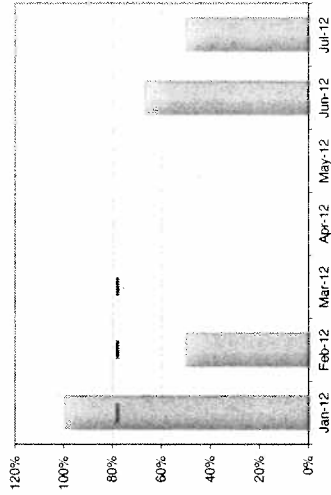
The Court Team liaise effectively with the Adoption and Permanency Team to progress plans for individual children. There are fortnightly update meetings and adoption tracking meeting once month with the express aim of tracking and progressing Adoptions and Special Guardianships. The Statutory Reviewing process also monitors plans for LAC and the Independent Reviewing Officer as a statutory role in ensuring the local authority care plan is meets the needs of children. From the tracking data it is expected that there will be 15 Adoption Orders which is on target. In regard to Special Guardianship Orders 14 achieved, with a further 4 anticipated by November 2012.

Long term trend (last 6 years)	Key	2006/07	2007/08	2008/09	2009/10	2010/11	2011/12	2012/13	Traffic Light
Haringey (Adoptions and SGOs)		-	-	-	-	27	27	22	Data Only
Haringey- Adoptions		-	-	-	-	16	14	8	
Haringey- SGOs		-	-	-	-	11	13	14	
Stat. Neighbours (adoptions only)	▲	19	18	17	17	16	-	-	



Op391 (NI) Timeliness of placements of looked after children for adoption following an agency decision that the child should be placed for adoption

Recent trend (last 6 months)	Key	Jan-12	Feb-12	Mar-12	Apr-12	May-12	Jun-12	Jul-12	Traffic Light
Haringey	■	100%	50%	-	-	-	67%	50%	
Haringey Target	■	78%	78%	-	-	-	-	-	



Performance Comment

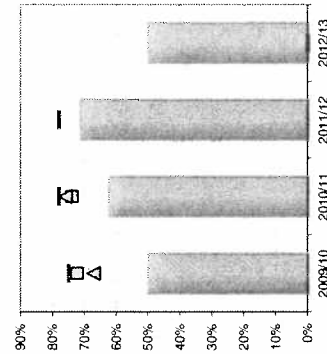
In the year to July 50% (4 out of 8) looked after children were placed for adoption within 12 months of the decision that they should be placed for adoption, and remained in that placement on adoption. This represents a decline in performance from 2011/12 (71%) and is below the latest benchmarking data for statistical neighbours (76% in 2010/11).

This indicator is included for information but is superseded by the new adoption scorecard indicators, listed below (no target has been set for this year)

Service Comment

It is acknowledged that there has been a lack of timeliness in relation to 4 children which took them out of time scale. The revised monitoring arrangements that have been put in place will provide a challenge to the service on timeliness in the future.

Long term trend (last 6 years)	Key	2006/07	2007/08	2008/09	2009/10	2010/11	2011/12	2012/13	Traffic Light
Haringey	■	-	-	-	50%	63%	71%	50%	
Haringey Target	■	-	72%	-	75%	78%	78%	-	
Statistical Neighbours	△	68%	66%	79%	67%	76%	-	-	
London	◆	65%	71%	77%	74%	-	-	-	
England	□	75%	76%	75%	72%	74%	-	-	

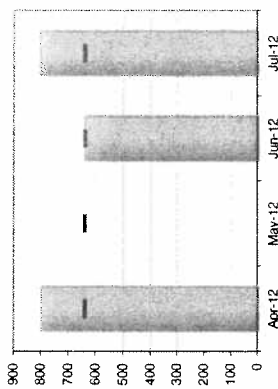


HY483

Average days from becoming looked after to being placed for adoption for children adopted in period (Adoption Scorecard Indicator A1)*

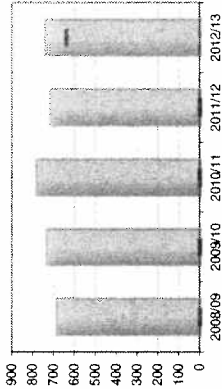
* This figure relates to adopted children only (it excludes children placed for adoption)

Recent trend	Key	Jan-12	Feb-12	Mar-12	Apr-12	May-12	Jun-12	Jul-12	Traffic Light
Haringey		-	-	-	797	N/A	639	805	Red
Haringey Target	■	-	-	-	639	639	639	639	●



Performance Comment

- The average days from becoming looked after to being placed for adoption was 741 for the period April- July 2012. This is above the 639 day target (rolling 3 years) which is based on national threshold levels for 2010-2013.
- The increase to 805 days in July is largely due to one child who was adopted after over 1200 days in the process.
- In the 3 year rolling average calculation 2010-13 the 2009/10 average will drop off leaving the 2012/13 average to be added to the average days for 2010/11 (784) and 2011/12 (715).
- The 2012/13 average will therefore need to reduce significantly if Haringey is to achieve the national threshold of 639 days. Assuming equal numbers of adoptions each year, an average of 418 days would be required for 2012/13 in order to meet the national threshold.



Service Comment

The reasons for this is largely attributed to delays in family finding at a time when the Adoption Team was the subject of high staff turn over. The situation has improved in terms of team stability and this has led to an increase in the early identification of children where Adoptive Placements may be needed. However, as many of the children have been subject to an plan for Adoption for some considerable time this will impact negatively in terms of timeliness on future data.

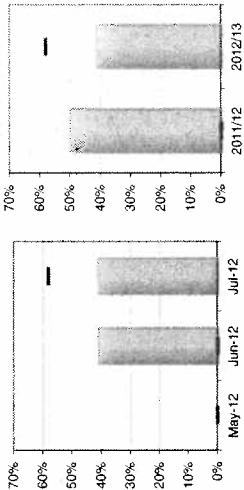
Long term trend	Key	2006/07	2007/08	2008/09	2009/10	2010/11	2011/12	2012/13	Traffic Light
Haringey		-	-	686	736	784	715	741	Red
Haringey Target	■	-	-	-	-	-	-	639	●

Three year average	2008-11	2009-12
Haringey	739	747
Statistical Neighbours	717	
England	625	

Op486 Placed for adoption within 21 months of becoming looked after (Adoption Scorecard Indicator A3)*

* This figure relates to adopted children and children placed for adoption. Figures shown are year to date figures as at the end of the month indicated.

Recent trend	Key	Jan-12	Feb-12	Mar-12	Apr-12	May-12	Jun-12	Jul-12	Traffic Light
Haringey		-	-	-	-	-	41%	41%	Red
Haringey Target	I	-	-	-	58%	58%	58%	58%	



Performance Comment

- As at July 41% (7 out of 17) children were placed for adoption within 21 months of becoming looked after. This is below the provisional target (which is based on the national average).

Service Comment

3 of the children placed for adoption in the time period had been looked after for some considerable time. The increased volume of placements made includes children who have been looked after for some time which distorts this figure. There are a number of very young children, and 3 relinquished babies, for whom placements have been identified, which will impact positively on the this performance target. Also, the increased management scrutiny through permanency tracking and adoption linking meetings will assist in achieving the target of adoption within 21 months.

Long term trend	Key	2006/07	2007/08	2008/09	2009/10	2010/11	2011/12	2012/13	Traffic Light
Haringey							50%	41%	Red
Haringey Target	I							58%	

Three year average	2008-11	2009-12
Haringey	41%	41%
Statistical Neighbours	54%	
England	58%	

Average time between a local authority receiving court authority to place a child and the local authority deciding on a match to an adoptive family (days)

(Adoption Scorecard Indicator A2)

Performance Comment

- Haringey's 3 year average (2008-11) is 239 days from the local authority receiving court authority to place a child and matching with an adoptive family.
- The national threshold for 2010-2013 is 213 days, so based on 2008-11 levels Haringey is 26 days short of the threshold.

- Measuring progress on this indicator is reliant on CAF/CASS releasing data at local authority level.

Three year average	2008-11
Haringey	239
<i>Statistical Neighbours</i>	172
<i>England</i>	132

Service Comment

There are a number of processes in place to reduce the number of days from court authority place a child for adoption to the placement. The linking meeting is one such process as are the Adoption Tracking Meetings. The aim is to identify placements for children prior to achieving court authority to reduce the time they have to wait for placement. To this end the adoption service is recruiting a pool of adopters and there are 15 prospective adopters in assessment currently with a target date of September - January for approval. There have been 3 relinquished babies thus far this year.